

ER^{PLUS} SERIES | Price Computing Scale



SPECIFICATIONS

| Model | ER ^{PLUS} Series | | |
|-----------------------|--|--------|---------|
| Max.capacity (kg) | 3/6 | 6/15 | 15/30 |
| Readability (g) | 1/2 | 2/5 | 5/10 |
| Maximum tare (kg) | -2.999 | -5.998 | -14.995 |
| Internal resolution | 1/60,000 | | |
| External resolution | 1/3,000 (Dual Interval) | | |
| Display digit | ER ^{PLUS} : 5/6/6 (weight/unit price/total price) ER ^{PLUS} -M : 6/6/8 (weight/unit price/total price) | | |
| Display type | ER ^{PLUS} : LCD / VFD / LED ER ^{PLUS} -M : LCD / LED | | |
| Operation temperature | -10°C ~ 40°C | | |
| Power | Rechargeable battery, 12V DC adapter | | |
| Battery life | ER ^{PLUS} : 200hrs(LCD)/ 45hrs(LED)/ 6hrs(VFD), ER ^{PLUS} -M : 200hrs(LCD)/ 40hrs(LED) | | |
| Platter size (mm) | 306(W) X 222(D) | | |
| Dimensions (mm) | Standard type : 330(W) X 346(D) X 107(H) Pole type : 330(W) X 384(D) X 413(H) | | |
| Product weight (kg) | Standard type : 4.7 Pole type : 5.5 | | |

FEATURES

- Direct 41 direct PLUs (ER^{PLUS}-M)
- Apply 5 direct PLUs with 200 indirect PLUs
 - *PLU (Price-Look-Up) function: Preset keys for frequent transaction items and its price. It makes your business operation more convenient
- Soft touch tact switch with silicon rubber key pad
- Adopted dual interval technology for better accuracy
- Various type of displays (LCD, LED, VFD)
- Calculation function
- Rechargeable battery operation
- Daily total function
- Auto power-off function
- Adjustable weighing stability

OPTION

- Client view pole display
- Backlight (LCD only)
- Rechargeable battery (VFD only)
- RS-232C interface (Connection with PC or Printers)
- DLP-50 / DEP-50
- Dust protection cover
- Large tray or Fish tray
- Dry battery holder (ER^{PLUS}-M)

CAS

CAS BLDG., # 440-1, SUNGNAE-DONG,
GANGDONG-GU, SEOUL, KOREA

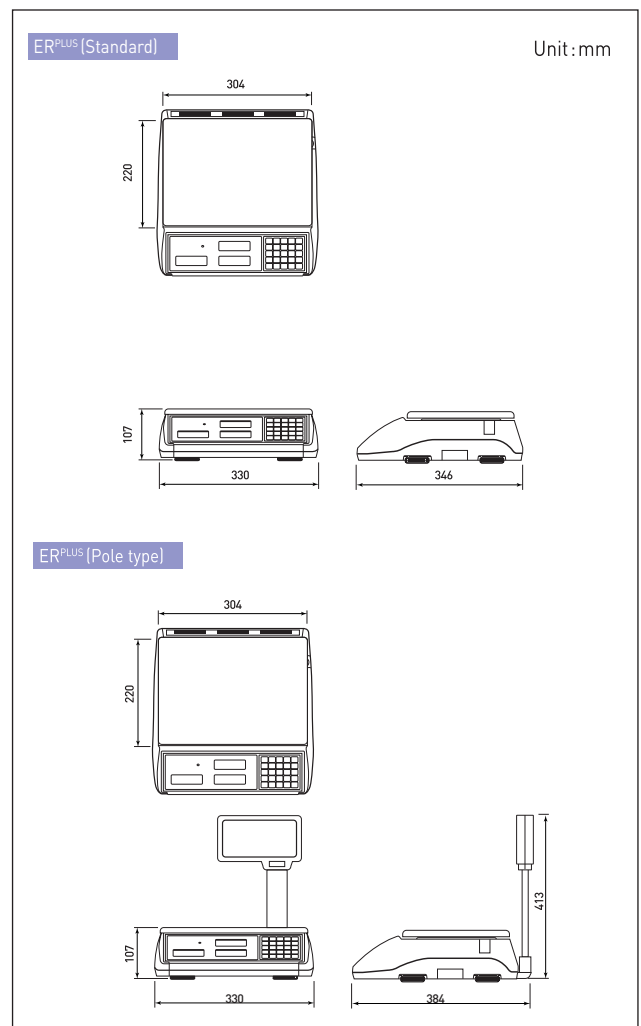
TEL_ 82 2 2225 3500

FAX_ 82 2 475 4668

<http://www.globalcas.com>

Specifications are subject to change for improvement without prior notice.

DIMENSIONS





Dual interval technology



Client view pole display



Soft touch key pad

ER^{PLUS}-M SERIES

Price Computing Scale

ER^{PLUS} is the best choice to make your business more attractive and cost effective with variety of flexible applications.

- Label or ticket printer combination
- RS-232C interface



ER^{PLUS} SERIES



Various type of display (LCD, LED, VFD)

The users can choose one among LCD, LED, VFD regarding to user's business environment.



LCD



LED



VFD



▲ Client view pole display

Dual interval technology with high resolution

ER^{PLUS} series have 1/3,000 high resolution and adopts dual interval technology, which allows that scale weighing interval is automatically changed when certain amount of weight is loaded on tray.



Double tray type

The scale is designed with a plastic and stainless steel tray made of heavy-duty and washable material.



Stainless Steel >

Plastic >

Soft touch tact switch key pad

The key pad can be protected from water, flour, dirt and every other external agent.



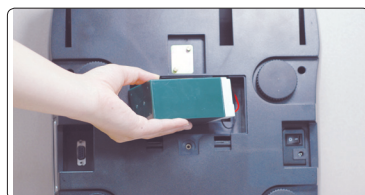
Total Direct PLU 41 keys (ER^{PLUS}-M)

These PLU keys are writeable, editable and easy to press.



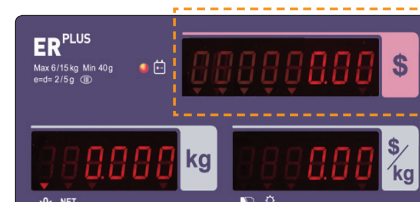
Rechargeable battery operation

The scale can be used up to 200hrs(LCD) / 45hrs(LED) / 6hrs(VFD) after recharging the battery for 10 hours.



8 digit total display window (ER^{PLUS}-M)

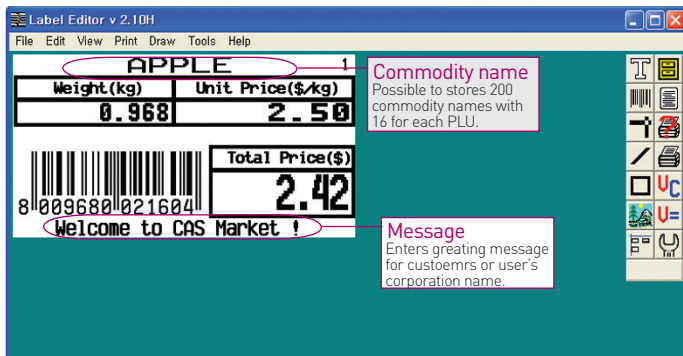
It indicates total price up to 8 digits.



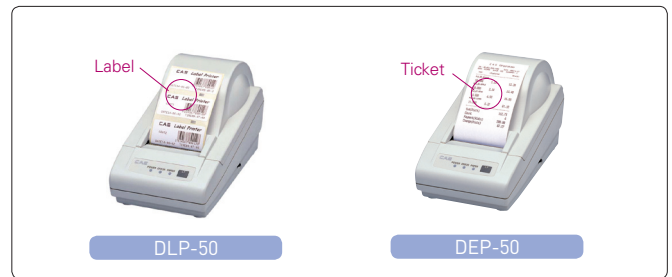
Price Computing Scale

Connection with barcode label or ticket printer

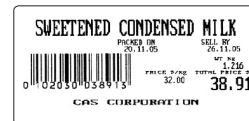
ER^{PLUS} series can be connected to DLP-50 (Label) and DEP-50 (Ticket) printer via RS-232C interface. It can be used as a label/ticket printing scales. Furthermore, the users can be possible to modify the label/ticket format via provided label/ticket editing PC software



The label format shows commodity name, item's date (packed on data & sell by data), weight, total price, unit price and message.



▲ RS-232C interface



▲ Label Print



| CAS Corporation | | | |
|-----------------|------------|-------|--|
| DATE: 06/01/07 | | | |
| weight | unit price | total | |
| (kg) | (\$/kg) | (\$) | |
| ----- | | | |
| Apple | | | |
| 0.450 | 1.23 | 0.57 | |
| Banana | | | |
| 0.490 | 1.23 | 0.57 | |
| Kiwi | | | |
| 0.450 | 4.56 | 2.10 | |
| Sum:(\$) | | 3.24 | |
| Count | | 3 | |
| Payment:(\$) | | 3.24 | |
| Change:(\$) | | 0.00 | |

▲ Ticket Print

LINE UP



▲ ERPLUS (Large tray)



▲ ERPLUS (Fish tray)



▲ ERPLUS -M (LED)



▲ ERPLUS -M (LCD)



▲ ER-P