



BORDER SCALES
WE'RE WEIGH BETTER

ISHIDA UNI-3 Electronic System Linerless Printing Scale more accurate and faster...



Versatile and vast software functionality, all coupled with Ishida's quality and reliability, makes the UNI-3 series a must for various retail businesses such as wholesale stores, butcher shops, green grocers, and supermarkets.

ACCURACY AND CONSISTENCY

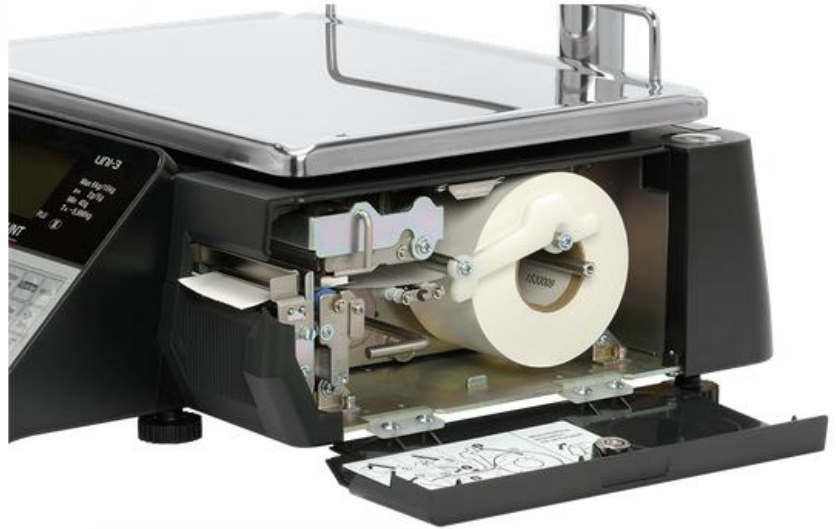
Accurate weighing and repeatability is fundamental for every customer.

ENVIRONMENTAL SUSTAINABILITY

Linerless is the future of labels, Now!
The linerless label roll, has no backing paper, so no waste to end up in landfills, thus reducing the negative impact on the environment...

ELIMINATING PAPER WASTE

Because of the continuous nature of linerless, the printer cuts the label to the minimum length required, so labels with a lot of information, like nutritional content or ingredients, will be longer or shorter, saving you on unnecessary paper costs, while contributing to environmental sustainability!



BORDER SCALES

**BEEF STEAK
GRASS FED BEEF**



PACKED ON: 22-04-24
BEST BEFORE: 24-04-24
TARE: 0,006kg

BEEF	Rand/kg 98,99	Mass (kg) 0,462
--------	------------------	--------------------

PRODUCT OF SOUTH AFRICA

TOTAL PRICE


R45,73



2 000061 045734

BORDER SCALES

**BEEF BOEREWORS
BRAAI TIME FAVOURITE**



PACKED ON: 22-04-24
BEST BEFORE: 24-04-24
TARE: 0,008kg

Rand/kg 94,99	Mass (kg) 0,490
------------------	--------------------

INGREDIENTS:
BEEF, PORK (CONTAINS MINIMUM 90% MEAT AND MAXIMUM 30% FAT), CEREAL, SALT, DEXTROSE, SPICES (IRRADIATED), PERMITTED FLAVOURANT, MSG, SPICE EXTRACTS, PRESERVATIVE: SULPHUR DIOXIDE.


ALLERGENS:
MAY CONTAIN DAIRY AND EGGS

CASING:
SHEEP CASING

PRODUCT OF SOUTH AFRICA

TOTAL PRICE

R46,55



2 000151 046559

HIGH QUALITY DISPLAY

Bright 16-segment LCD display with green/orange backlight.



The UNI-3 series provides the perfect requirements with bench and pole model variants and a fully-loaded yet easy and user-friendly software. Available in standard label or linerless printer options.



Receipt printing
visible fonts



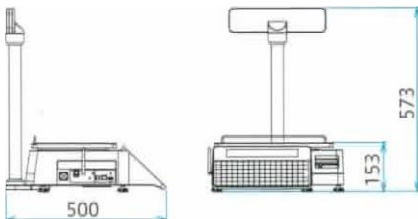
Label printing



Pole



Bench



MEMORY EXPANSION

External memory may be added via USB in the case of memory expansion for PLU database and/or transaction data.

EASY OPERATION

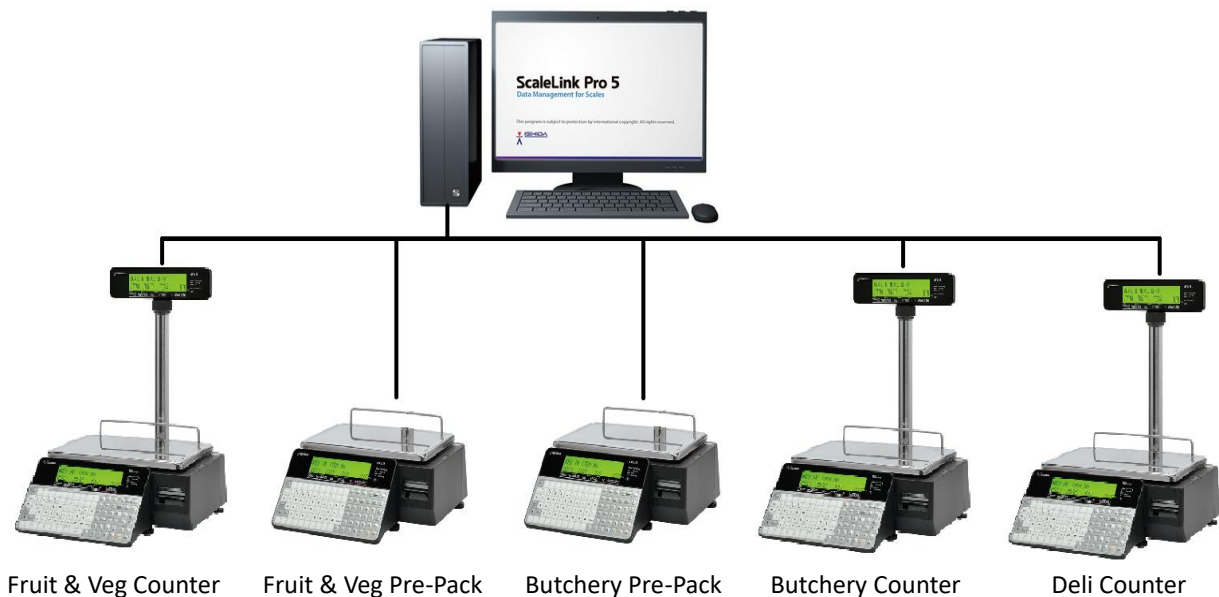
Simple and convenient operation to call up and program a PLU.

HIGH SPEED LABEL AND PRINT QUALITY

Printing of labels or receipt with pre-set printing speed and thermal head darkness adjustment.

SYSTEM CONFIGURATION

SLP5 is a powerful Windows PC based, server/client PLU management software. It completes the UNI-3 series and takes it to new heights. The SLP5 software, the 5th generation of the ScaleLink family software, is freely configurable to make it as simple as possible for the end user to keep data up to date and synchronized on all scales in the system. Supporting mdb and SQL type databases, and the graphical user interface is by far one of the most user-friendly software in the retail scale business sector.



SPECIFICATIONS

MODEL NAME	UNI-3 series
CAPACITY	Max 15kg Increments 2g/5g (Dual range)
PLATTER SIZE	360mm x 250mm
POWER SUPPLY	AC240V, 50/60Hz
PRINTING SPEED	MAX 100mm/sec
LABEL SIZE	W 38 mm to 64mm L 30 mm to 175mm Printing area W 56mm.
LABEL ROLL SIZE	Outer diameter 100mm or less Inner diameter 40mm±1 mm
USE CONDITIONS	Temperature; -5 to 40°C Humidity:20 to 85% No condensation
INPUT/OUTPUT	LAN x 1 USB x 1 Drawer x 1

ScaleLink Pro 5



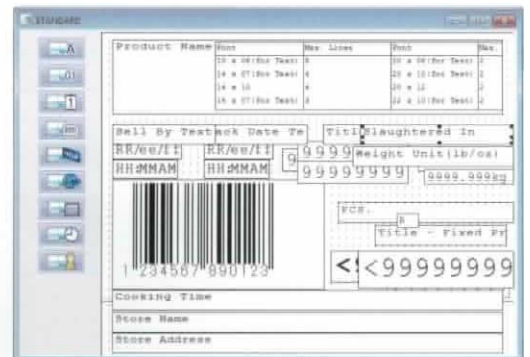
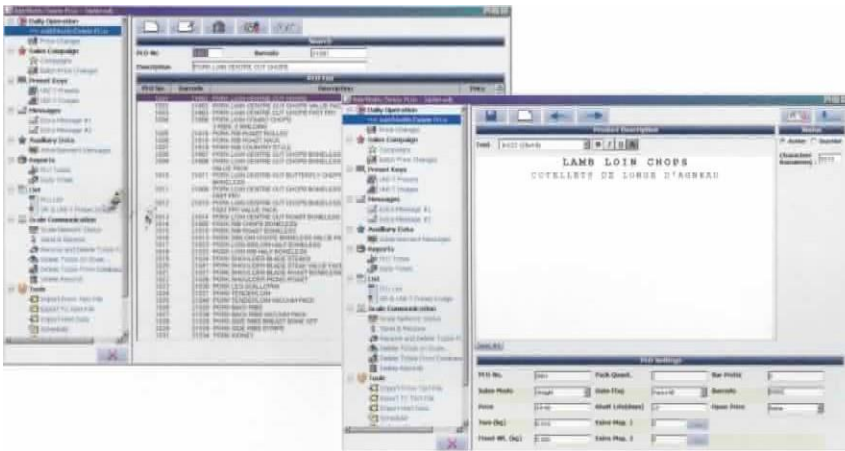
SLP.S



Maintenance utility



Setup utility



Please ask your local contact for working condition and licence of Scale Link Pro.