

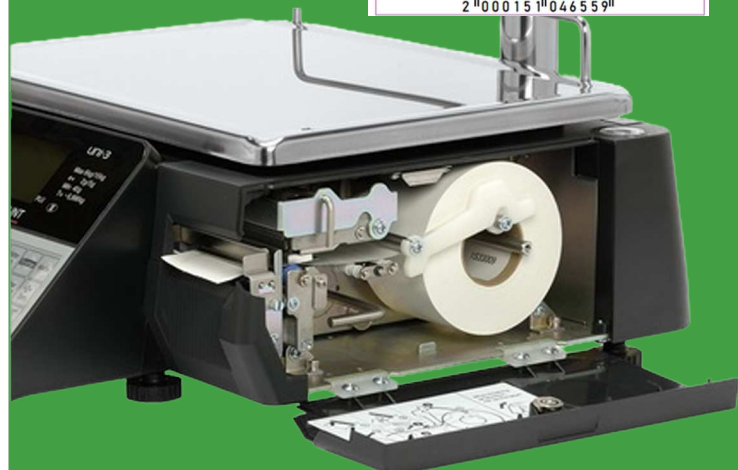
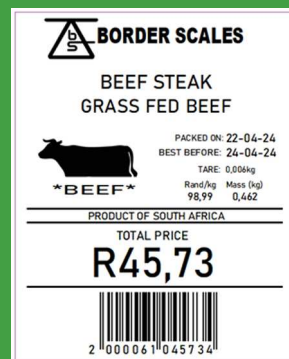
THE ISHIDA UNI - 3 THE ECO-POWERHOUSE OF MODERN RETAIL



BOOST RETAIL EFFICIENCY WITH THE ISHIDA UNI-3 L2 LINERLESS PRINTING SCALE

In retail, time is money. The Ishida Uni-3 L2 delivers high-speed label printing at up to 100 mm per second, ensuring that long queues don't slow your business down. With quick product recall and efficient checkout handling, you can serve more customers in less time while keeping the experience stress-free.

Accuracy and sustainability are at the heart of the Uni-3 L2. With its linerless label printing option, the Uni-3 L2 reduces waste, cuts costs on backing paper, and offers greater flexibility in label length, making it an eco-friendly and efficient choice for busy retail environments. Free format linerless label printing with customizable layouts up to 58 mm wide × 175 mm long so you never have to compromise on product transparency. Side-load label rolls make swaps simple, minimizing downtime and ensuring your store stays compliant while keeping customers informed.



Built for busy retail environments, the Uni-3 L2 combines a compact and environmentally friendly footprint with powerful functionality. Available in bench or pole type to fit any retail space.

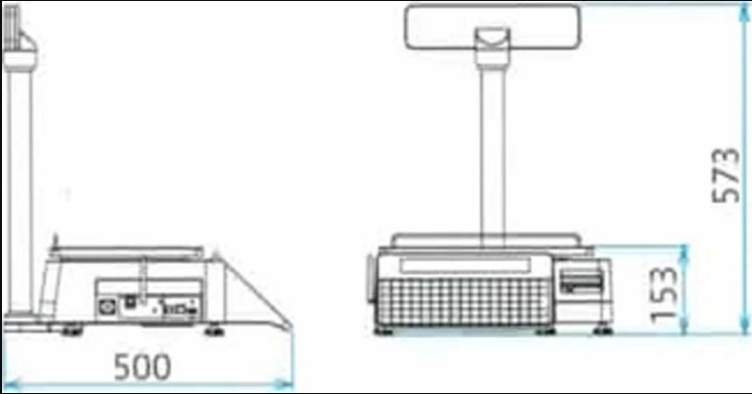
The dual(orange/green)16 segment backlit display provides operators with product details while showing customers transparent pricing. With up to 168 pre-sets and 8,000 PLUs, staff can access items quickly, boosting productivity across butcheries, supermarkets, and fresh produce outlets.

SPECIFICATIONS

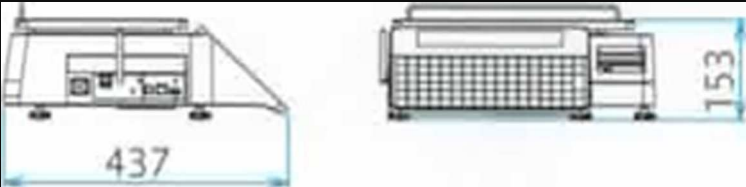
MODEL NAME	UNI-3 series
CAPACITY	6kg/2g, 15kg/5g (Dual range) 30kg/10g (single range)
POWER SUPPLY	AC100-240V, 50/60Hz
PRINTING SPEED	MAX 100mm/sec
LABEL SIZE	W 38 mm to 64mm L 30 mm to 175mm Printing area W 56mm.
LABEL ROLL SIZE	Outer diameter Φ100mm or less Inner diameter Φ40mm±1mm
USE CONDITIONS	Temperature: - 5 to 40°C Humidity:20 to 85% No condensation
INPUT/OUTPUT	LAN x 1 USB x 1 Drawer x 1



Pole Type:



Bench Type:



Beyond weighing and labeling, the Uni-3 L2 is built to integrate seamlessly into today's connected retail world. With Ethernet networking included and wireless options available, multiple scales can be linked to back-office systems. This makes managing pricing, reporting, and product data across multiple stores both simple and reliable.

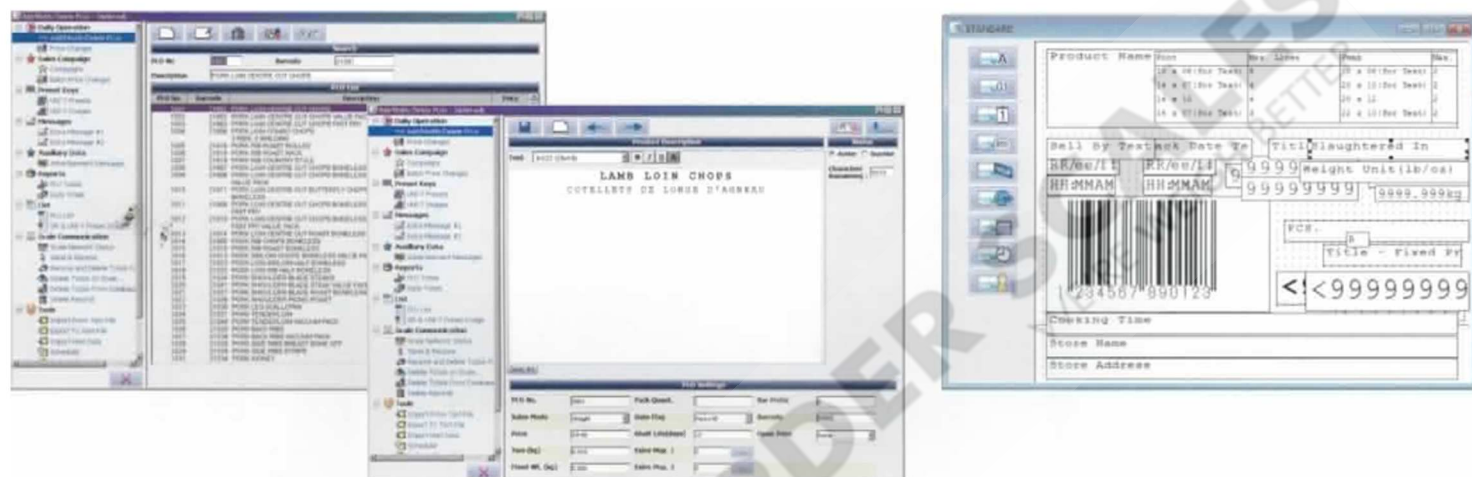
ScaleLink Pro 5



SLP5

Maintenance utility

Setup utility



Please ask your local contact for working condition and licence of Scale Link Pro.

SLP5 is a powerful Windows PC based, server/client PLU management software. It completes the UNI-3 series and takes it to new heights. The SLP5 software, the 5th generation of the ScaleLink family software, is freely configurable to make it as simple as possible for the end user to keep data up to date and synchronized on all scales in the system. Supporting mdb and SQL type databases, and the graphical user interface is by far one of the most user-friendly software in the retail scale business sector.

